

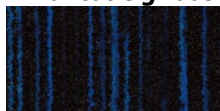
KLM Crew Training Centre



KLM Building 203/204, training center for pilots and cabincrew, has been renewed. For each room a Forbo floor has been chosen starting at the entrance where you can see a Coral Welcome. Marmoleum Walton and Striato are used in the flight safety hall with 2 brand new flight simulators, the offices and corridors.

Projekta nosaukums	KLM Crew Training Center
Adrese	Schiphol
Arhitekts	Sander Griffioen
Celtnieks	Maasdam Projectinrichting
Fotogrāfs	Michael van Oosten
Datums	juni 2019

Izmantotie grīdas segumi



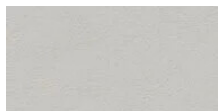
Coral Welcome
blue velvet



Marmoleum
Concrete
blue shimmer



Marmoleum
Walton
petrol



Marmoleum Solid
2024 alias
titanium



Marmoleum
Striato Original
withered prairie

